

# PRODUCT GUIDE



170 New Haven Street, Suite 4  
Mount Joy, PA 17552  
Phone: 717.664.2696  
eFax: 717.967.3684  
[info@guardianbarrierservices.com](mailto:info@guardianbarrierservices.com)  
[www.guardianbarrierservices.com](http://www.guardianbarrierservices.com)



FRONT ROW. EVERY SHOW.



## FRONT ROW. EVERY SHOW.

Founded in 2017 and backed by a team of seasoned crowd management professionals, Guardian Barrier Services brings together American innovation, engineering expertise, and top-tier fabrication techniques to craft an advanced barrier system tailored for a wide range of applications. These include festivals, stadium concerts, political events, and more.

Our signature offering is a lightweight, user-friendly aluminum structure that excels in virtually any setting, from inside stadiums and arenas to uneven terrain and sand. In addition to the crowd control barrier, Guardian provides a comprehensive array of on-site solutions, including cable ramps, rolling risers, VIP/ADA platforms, truss structures, delay towers, and spotlights.

Guardian emerged stronger than ever amidst the industry-wide slowdown of 2020/21. We proudly introduced a robust trucking division, headquartered in a sprawling 60,000-square-foot facility in Mount Joy, PA, complemented by gear deposits strategically located throughout the country. This strategic expansion empowers us to service our clients within one business day in most markets.

Guardian Barrier Services has firmly established ourselves as the trailblazer in the industry, with our innovative gear and skilled field technicians making a presence nationwide, right in the *front row of every show*.





## CONTENTS

### Barrier

#### 03 Straight Section

#### 04 Corners: Flexible, Vario, Fixed

#### 05 Gates: Multi-Purpose, ADA, 5ft, 10ft, XXL Snake

#### 06-08 Special Barrier: Terrain Adjuster Kit, 3-Way Adapter, Curb Jumper, Entry Gates, Bar Barrier, High Barrier, End Caps, Security Walkway, Flat Base Barrier, Fence Panels, VIP Fencing, Bike Rack

### CABLE RAMPS

#### 08 AMS Modular: Basic, ADA, Deep Trough

#### 09 Guard Dog: Basic, ADA

#### 10 Diamond Plate: Guardian HD Modular, Standard

### SPOTLIGHTS

#### 11-12 Lycian 1295, Gladiator IV, Lycian 1293, R.J. Aramis, Lycian 1290, R.J. Ivanhoe, Super Trouper II, Super Trouper

### ROLLING RISERS

#### 13 Rolling Risers, Caster Work Box, DJ Tracking Tables

### DECKING

#### 14 VIP Platforms, ADA Platforms, FOH Structure, Camera Platforms

### STRUCTURES

#### 15 Delay Towers, Truss Structures, Scaff Structures, Ballasting Blocks

### FLOORING

#### 16 Groundshieldz™, Matrax, Supa-Trac, iTrac, GRDZ-50





[www.guardianbarrierservices.com](http://www.guardianbarrierservices.com)



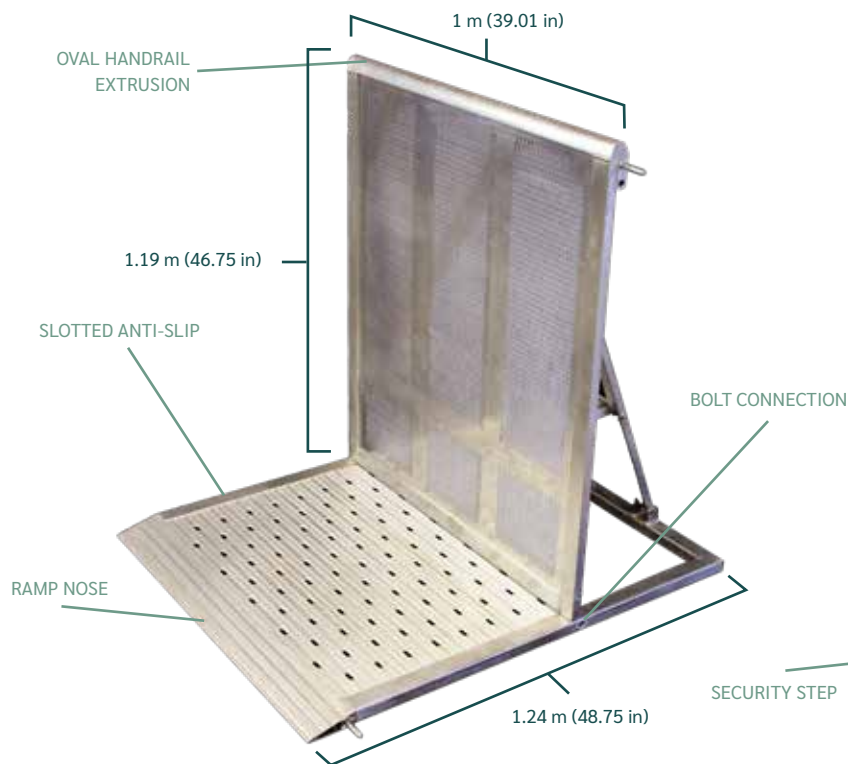
## BARRIER: STRAIGHT SECTION

Guardian Barrier Services signature product is our barrier. The user-friendly system has been designed for quick set up, easy load, and ultimate safety during any crowd control situation.

The light-weight, aluminum design features a two-pin connection to the next section and folds nicely onto a custom cart.

### FEATURES

- 1 meter/3.28ft working width
- 77lbs
- Available in 1/2 meter sections
- Rounded top rail for comfort
- Simple single-bolt connection with option for a second bolt
- Rear step for visual and physical access to audience
- Two-pin connection
- Slotted, anti-skid base plate with ramped nose allows airflow
- Stacks 10 per cart at 1017lbs







## BARRIER: CORNERS



[www.guardianbarrierservices.com](http://www.guardianbarrierservices.com)

### FLEXIBLE



### FEATURES

- $-90^{\circ}$  -  $+90^{\circ}$
- 35lbs
- Dual functions as a cable pass-through
- Slotted hinge can be locked when set
- Can be used for uneven terrain
- Also available in XL and XXL versions

### VARIO



### FEATURES

- $-45^{\circ}$  -  $+45^{\circ}$
- 74lbs
- Tapered tread plate to avoid trip hazards
- Suitable for high pressure areas

### FIXED



### FEATURES

- Available in inside/outside  $30^{\circ}$  and  $45^{\circ}$
- 45lbs
- Seamless tread plate
- Seamless top rail
- Suitable for high pressure areas





www.guardianbarrierservices.com



## BARRIER: GATES

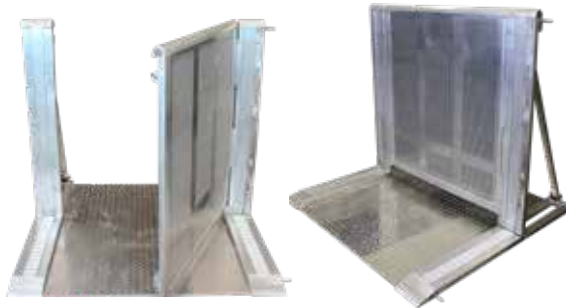
### MULTI PURPOSE



### FEATURES

- 26.5in opening
- 103lbs
- Cable pass-through
- Door for staff access
- Suitable for high pressure areas

### ADA



### FEATURES

- 42in opening
- 127lbs
- Cable pass-through
- Door for ADA compliant access
- Suitable for high pressure areas

### 5FT



### FEATURES

- 60in opening
- Ideal for crowd egress
- Quick-release, back gate support
- Suitable for medium pressure areas

### 10FT



### FEATURES

- 120in opening
- Ideal for vehicles in low-pressure environments
- Dual, quick-release, back gate supports

### XXL SNAKE



### FEATURES

- 80.5in opening
- 15-channel, ADA cable ramp pass-through
- Dual doors for staff access
- Dual, back gate supports





## BARRIER: SPECIAL



[www.guardianbarrierservices.com](http://www.guardianbarrierservices.com)

### TERRAIN ADJUSTER KIT



### FEATURES

- Connects to barrier to adapt to most uneven terrain
- Allows for safe and smooth transitions over hills and through valleys
- Available in +4°, -4°, +2°, -2°
- Reduced risk of pinch points

### 3-WAY ADAPTERS



### SPECS

- 1/3 meter wide
- Allows barrier to split off to a third direction
- Back tabs allow for flex connections

### CURB JUMPER



### FEATURES

- Fits onto straight barrier
- Creates safe transition over curbs
- Jumps curbs up to 8.5in
- One-pin adjustment

### ENTRY GATES



### FEATURES

- Creates safe pedestrian passage
- Partitions off entry from event
- Controls crowd by forcing line formation
- Doors for lane closures
- Available in ADA compliant lanes



[www.guardianbarrierservices.com](http://www.guardianbarrierservices.com)



## BARRIER: SPECIAL

### BAR BARRIER



### FEATURES

- Built in 1 meter sections
- Provides bar top to barrier to advance VIP experience
- Allows for bar/merch transactions
- Perforated top drains spillage
- Rounded corners for comfort
- Simple single-bolt connection
- Sleek look

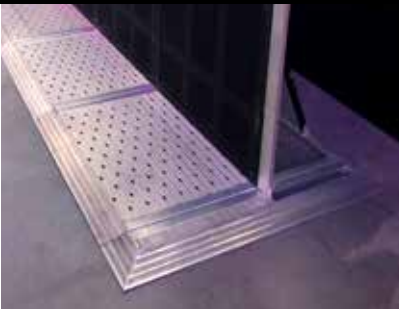
### HIGH BARRIER



### FEATURES

- 1 meter wide by 2 meters tall
- Ideal for line of sight kills
- Adds placement for signage

### END CAPS



### FEATURES

- Smoothly finishes off end of barrier
- Also available with tabs to connect flex corners

### SECURITY WALKWAY



### FEATURES

- Infill connects the back of the barrier to elevated platform giving security a continuous, raised viewing platform
- Ideal for security and camera operators





[www.guardianbarrierservices.com](http://www.guardianbarrierservices.com)

## BARRIER: SPECIAL

### FLAT BASE BARRIER



### FEATURES

- Ideal for seated shows allowing seats to be placed on base
- Rounded top rail for comfort
- Simple single-bolt connection with option for a second bolt
- Rear step for visual and physical access to audience
- One-pin connection

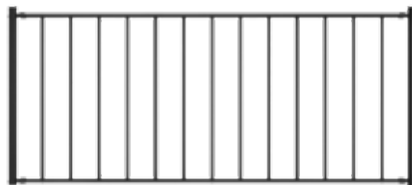
### FENCE PANELS



### FEATURES

- Ideal for low-pressure areas
- Allows seats to be closer to barrier
- Perfect substitution for bike rack

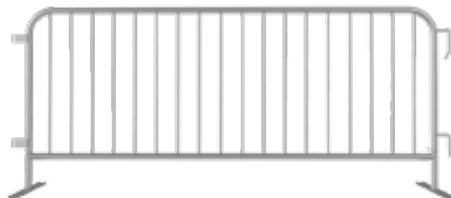
### VIP FENCING



### FEATURES

- Attractive look for high-end events
- 40in tall x 8ft long
- Easily transports on carts

### BIKE RACK



### FEATURES

- 43in tall x 84in long
- 42lbs
- Adjustable flat feet for flat packing



[www.guardianbarrierservices.com](http://www.guardianbarrierservices.com)



## CABLE RAMPS: AMS MODULAR

### BASIC



### FEATURES

- Modular system that expands in sections of 5 channels
- Protects cables and hoses up to 1.325in outside diameter
- Dog Bone Connectors to extend to desired length
- Working length of 36in

### ADA



### FEATURES

- Modular system that expands in sections of 5 channels
- Protects cables and hoses up to 1.325in outside diameter
- Gradual slope and slip-resistant surface to ensure a safer crossing point
- Manufactured to meet ADA and DDA compliant specifications
- Working length of 36in

### DEEP TROUGH

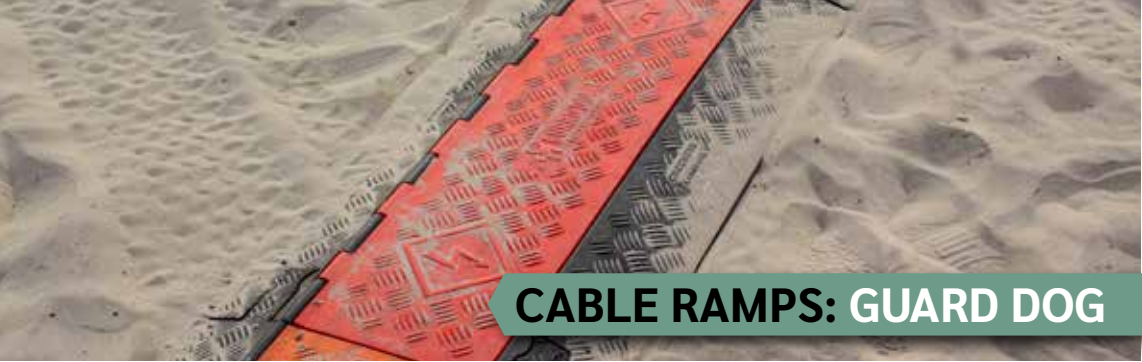


### FEATURES

- Modular system that expands in sections of 3 channels
- Protects cables and hoses up to 2.125in outside diameter
- Dog Bone Connectors to extend to desired length
- Ideal for looms and thick hoses
- Working length of 36in







[www.guardianbarrierservices.com](http://www.guardianbarrierservices.com)

## CABLE RAMPS: GUARD DOG

### BASIC



### FEATURES

- 5 channel capacity
- Protects cables and hoses up to 1.325in outside diameter
- Dog Bone Connectors to extend to desired length
- Hinged lid provides a safer crossing for vehicle and pedestrian traffic

### ADA



### FEATURES

- Interconnects directly to a 5-channel standard ramp Guard Dog cable protector
- Provides safer crossing for vehicle and pedestrian traffic while protecting valuable electrical cables and hoses
- ADA/DDA accessibility ramps built-in





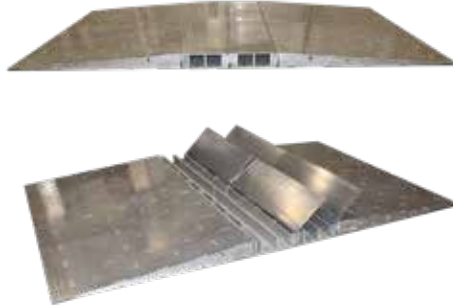


[www.guardianbarrierservices.com](http://www.guardianbarrierservices.com)



## CABLE RAMPS: DIAMOND PLATE

### GUARDIAN HD MODULAR



### FEATURES

- Heavy duty construction
- Modular design that expands in sections of 2 or 5 channels
- Protects cables and hoses up to 3.375in outside diameter
- Ideal for loom and thick hoses
- Withstands heavy equipment traffic
- Packs nicely in standard barrier carts

### STANDARD



Standard Ramp

Ramp with Extension

### FEATURES

- Heavy duty construction
- Protects cables and hoses up to 3in outside diameter
- Ideal for looms and thick hoses
- Available ramp extensions allow for smooth traffic crossing







[www.guardianbarrierservices.com](http://www.guardianbarrierservices.com)

## SPOTLIGHTS

### LYCIAN 1295

Wattage  
**4000W or 3000W**



#### FEATURES

- Very powerful, long spot
- Center mounted 6-color boom
- Single lever trombone intensifies beam as diameter is reduced
- Operable from right or left side
- Ball bearing suspension for smooth and easy pan and tilt

### GLADIATOR IV

Wattage  
**4000W**



#### FEATURES

- Two optional 6-position, self-canceling boomerang color changers
- Adjustable friction controls for tilt and pan movement
- Quick-disconnect circular connector contains all DC and control leads
- "Cold" electro-formed precision reflector

### LYCIAN 1293

Wattage  
**3000W**



#### FEATURES

- Center mounted for 6-color boom
- Lightweight electric power supply
- Quick focus knob
- Single lever trombone intensifies beam as diameter is reduced
- Operable from right or left side

### R.J. ARAMIS

Wattage  
**2500W**



#### FEATURES

- Smooth dimmer shutter retains flat beam color temperature
- Frost filter on flip lever
- Fast-locking focus handle
- Easy-to-balance counterweight with steady movement, even at long distances



www.guardianbarrierservices.com



## SPOTLIGHTS

### LYCIAN 1290

Wattage  
**2000W**



### FEATURES

- Self-contained power supply
- Single chassis construction for stable optical alignment
- Single lever trombone intensifies the beam as the diameter is reduced
- Rapid tilt balance adjustment to suit operator

### R.J. IVANHOE

Wattage  
**2500W**



### FEATURES

- Optical high performance double condenser
- Frosted glass tilt
- Adjustable lyre strengthened
- Manual shutter/dimmer from 0 to 100%
- 230 Volt auxiliary output for feeding a color changer with tape protection

### SUPER TROUPER II

Wattage  
**2000W**



### FEATURES

- “Cold” metal reflector
- 6-color, self-canceling boomerang
- Operable from right or left side
- Horizontal masking control
- Lamp “shock mount” system

### SUPER TROUPER

Wattage  
**2000W**



### FEATURES

- 6-color, self-canceling boomerang
- Adjustable friction controls for tilt and pan movement
- “Cold” electro-formed precision reflector
- Comfort controls for iris, dimming and horizontal masking





[www.guardianbarrierservices.com](http://www.guardianbarrierservices.com)

## ROLLING RISERS

### ROLLING RISERS



### FEATURES

- Staging Dimensions decks with non-skid quad ripple surface
- Schedule 40 1.5in extruded corners
- 200 lb per sq ft load rating
- Available in 4x8 , 3x8, 2x8, 1x8, 4x4, 2x4, 1x4, 2x2, 1x2, triangle and grated decks

### CASTER WORK BOX



### FEATURES

- Full set contains enough legs and wheels to service 25 decks
- Half set contains enough legs and wheels to service 12 decks
- Contains 9in, 12in, 18in, and 24in static legs
- Custom options above 2ft available

### DJ TRACKING TABLE



### FEATURES

- Two 8ft wide DJ tables that roll on a 24ft wide base
- Allows for two DJ set ups at the same time resulting in rapid set changes
- Available in 2ft, 3ft, and 4ft depths



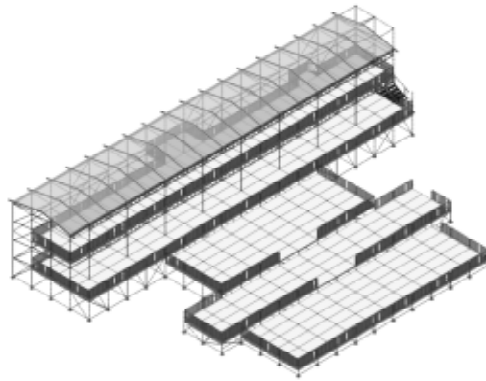


www.guardianbarrierservices.com



## DECKING

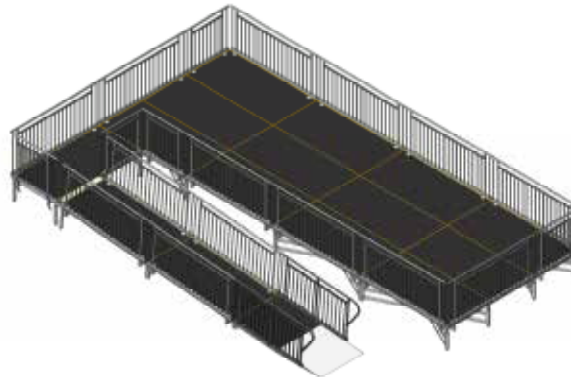
### VIP PLATFORMS



### FEATURES

- Multi-leveled
- Multi-tiered
- Covered or non-covered
- Build out of staging dimension decks or scaffolding

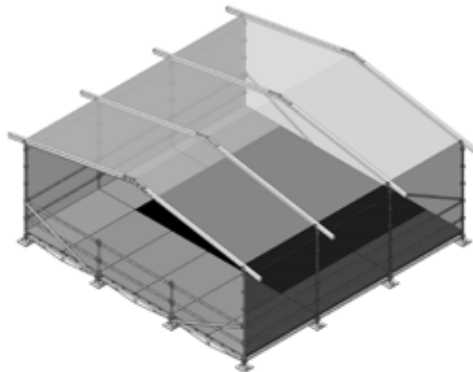
### ADA PLATFORMS



### FEATURES

- All decking, handrailing, and dimensions meet local ADA compliance
- Quick deployment in stadiums
- Build out of staging dimension decks or scaffolding
- Flexible construction on uneven terrain

### FOH STRUCTURE



### FEATURES

- 16x16, 24x24, 32x24, or 40x24
- Constructed using omni-ring steel scaffold with side wall skins and a roof skin
- Provides weather protection
- Multi-tier levels possible
- Self-ballasting, no need for additional concrete

### CAMERA PLATFORMS



### FEATURES

- Provides weather protection
- Flexible height
- Ships with required ballast
- Quick and easy deployment





[www.guardianbarrierservices.com](http://www.guardianbarrierservices.com)

## STRUCTURES

### DELAY TOWERS



### FEATURES

- 40ft height
- 2000lb capacity
- Self ballasting
- Self erecting
- Comes with 1 ton motor to fly PA

### TRUSS STRUCTURES



### AVAILABLE FOR:

- Entry portals
- Video arches
- Signage cubes
- RoBo spot towers

### SCAFF STRUCTURES



### AVAILABLE FOR:

- Loading docks
- Follow spot towers
- Ramps
- Pyro platforms
- Crossovers

### BALLASTING BLOCKS



UNI-BLOC  
1750 lbs

CZ BLOCK  
3000 lbs



### FEATURES

- UNI-BLOC compatible with 12in and 20.5in box truss outriggers
- Elevated for pallet jack and utility forks access
- Top mounting plate slides 8in from center in any direction
- Additional 2000lb and 3000lb blocks available

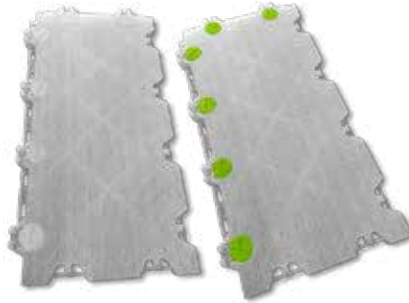


www.guardianbarrierservices.com



## FLOORING

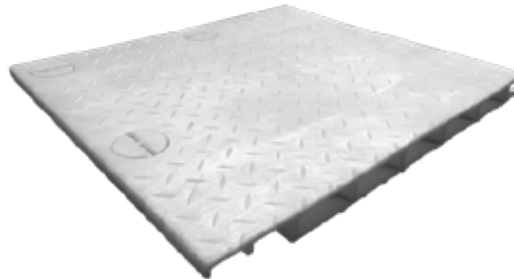
### GROUND SHIELDZ™



#### FEATURES

- Ideal for pedestrian walkways and/or machinery
- Offers both lightweight and heavy-duty ground protection
- Seamlessly locks together

### MATRAX



#### FEATURES

- For pedestrian and heavy vehicular access
- Ideal for covering access ways that have been compromised by unstable or soft soil conditions

### SUPA-TRAC



#### FEATURES

- Pedestrian-rated
- Lightweight yet durable solution for heavy pedestrian traffic
- Available in grey or white

### iTRAC



#### FEATURES

- Heavy-duty
- Enables heavy vehicular traffic, such as mobile stages, over turf, grass, dirt or gravel

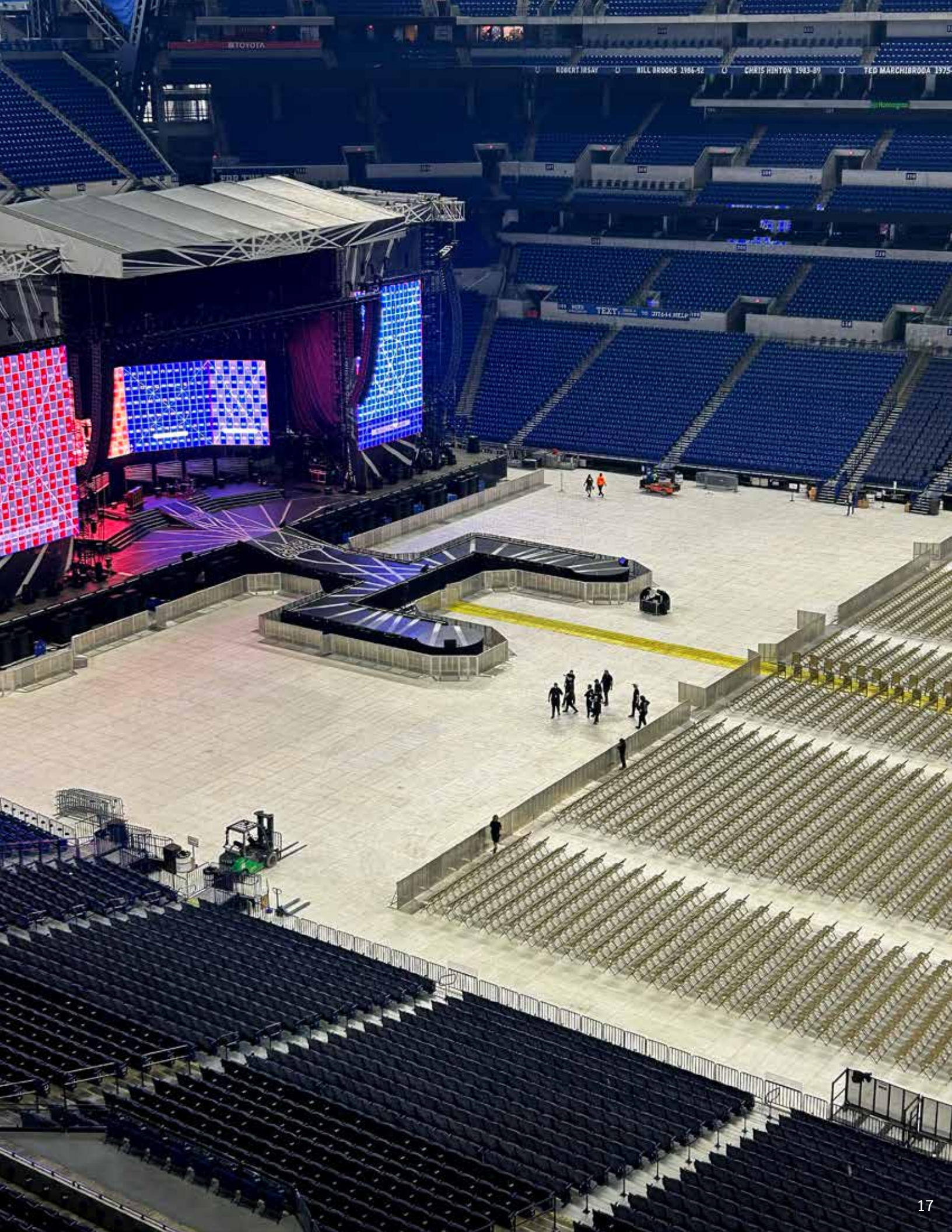
### GRDZ-50



#### FEATURES

- Aluminum roll-out solution
- Installed/dismantled in under 5 mins per roll with only two people
- 10ftx50ft and 5ftx50ft rolls
- For pedestrian and heavy vehicular access









FRONT ROW. EVERY SHOW.

170 New Haven Street, Suite 4  
Mount Joy, PA 17552  
Phone: 717.664.2696  
eFax: 717.967.3684

[info@guardianbarrierservices.com](mailto:info@guardianbarrierservices.com)  
[www.guardianbarrierservices.com](http://www.guardianbarrierservices.com)